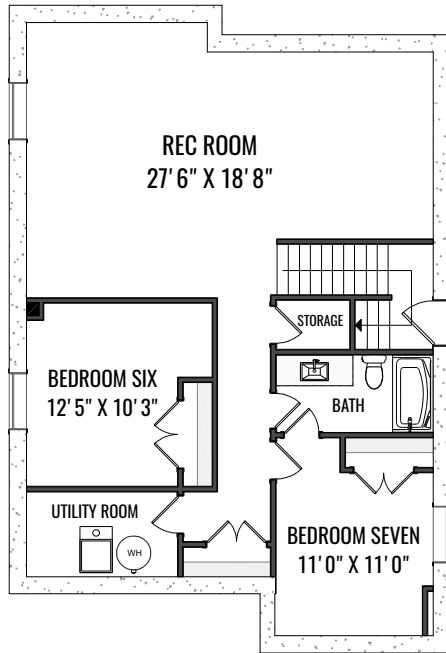


208 BAYVIEW STREET SW, AIRDRIE

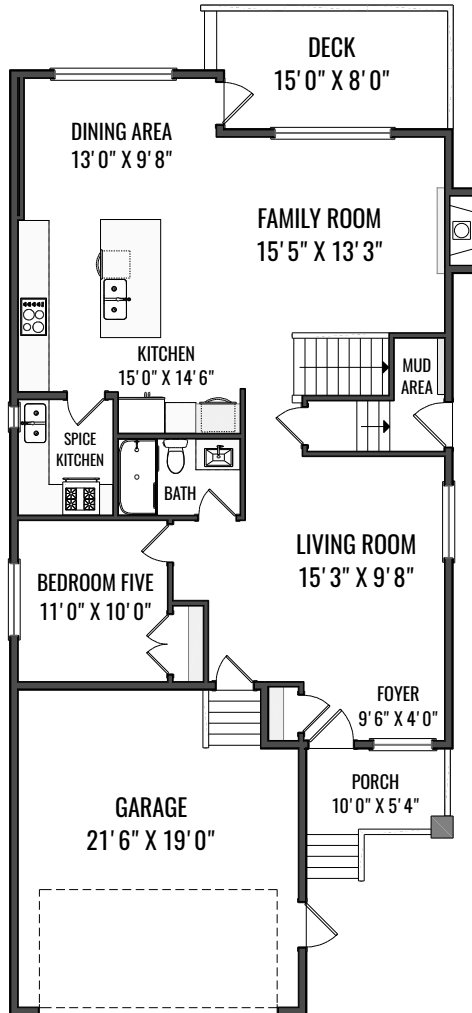
MAIN - 1243.67 Sq.ft. / 115.54 m²
UPPER - 1567.67 Sq.ft. / 145.64 m²
RMS TOTAL - 2811.34 Sq.ft. / 261.17 m²
BASEMENT - 1214.84 Sq.ft. / 112.86 m²
*FINISHED TOTAL - 1157.80 Sq.ft. / 107.56 m²

DETACHED SINGLE FAMILY
*RECA RMS MEASUREMENTS TAKEN TO EXTERIOR FOUNDATION

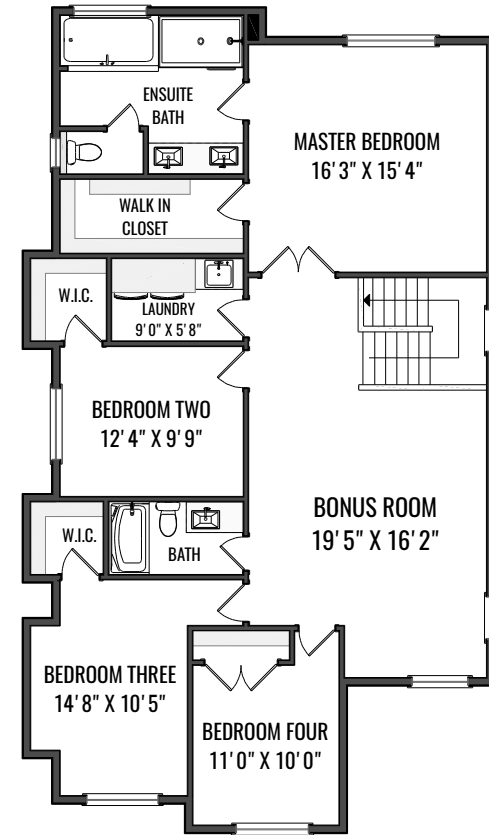
SERGHEI CICALA
CENTURY 21 POWERREALTY.CA
CICALASERGHEI@GMAIL.COM
MARCH 1, 2019



BASEMENT



MAIN LEVEL



UPPER LEVEL